

## Alcatel • Lucent Deskphones

### IP Touch 8 Series

4068  
4028  
4038

### 9 Series TDM

4039  
4029



Please check [plantronics.com](http://plantronics.com) for more phone options.

## Savi Office

### ORDER INFORMATION



### Savi™ Office

**Designed for seamless communication**  
Next generation of wireless headsets to maximize collaboration through multiple devices. Enterprise grade headset system providing excellent sound quality.  
**WO100**  
(Convertible headset system)



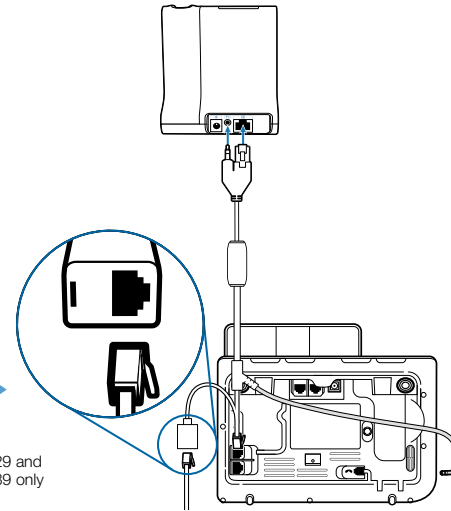
### REMOTE CALL ANSWERING

Requires following EHS solution to automatically answer a call by pressing a button on the headset.  
APA-20 (sold separately)



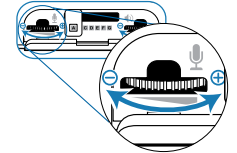
### SET UP INFORMATION

For a complete set up list please refer to the user guide.

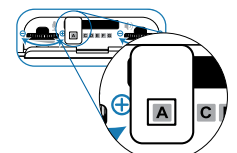


4029 and 4039 only

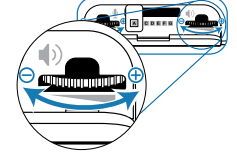
Set desk phone speaking volume to 2



Configuration switch



Set desk phone listening volume to 3



## CS55/CS70N/Plantronics Voyager 510S/SupraPlus Wireless

### ORDER INFORMATION

**Plantronics Voyager® 510S System**  
**Office and mobile phone usage**  
Use one headset for calls both in and out of the office with a noise cancelling microphone. Share seamlessly between office phone and Bluetooth® mobile phone or smart phone.  
**Bluetooth®**  
**TECO 07 QUALITY**  
Voyager 510S

**CS70N™ Wireless**  
**Stylish and discreet**  
Combining the excellent sound quality and range of DECT™ with the design edge of a mobile headset.  
CS70N

**CS55™ Wireless**  
**Flexible, cost effective and convenient**  
Cost-effective wireless headset with great range and sound quality and a choice of wearing styles.  
CS55  
**TECO 07 QUALITY**

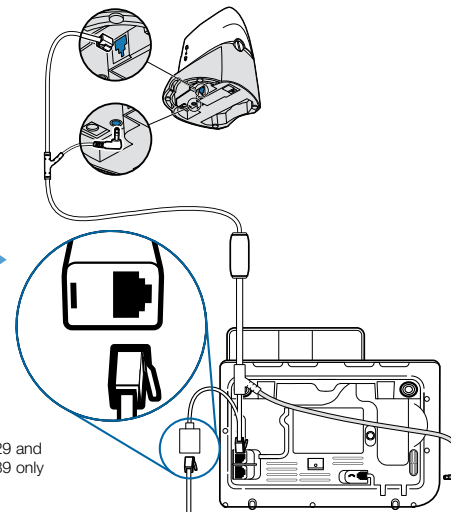
**SupraPlus® Wireless**  
**All-day wearing comfort**  
For intensive phone users — the ultimate comfort and sound quality — with the option of binaural style for noisy environments.  
CS351N Monaural  
CS361N Binaural  
**TECO 07 QUALITY**

### REMOTE CALL ANSWERING

Requires following EHS solution to automatically answer a call by pressing a button on the headset.  
APA-2 (sold separately)

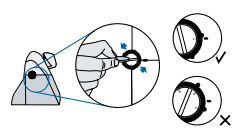


### SET UP INFORMATION

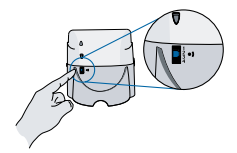


4029 and 4039 only

Set rotary switch to 1



Set rear slide switch to 2



Set bottom slide switch to B

